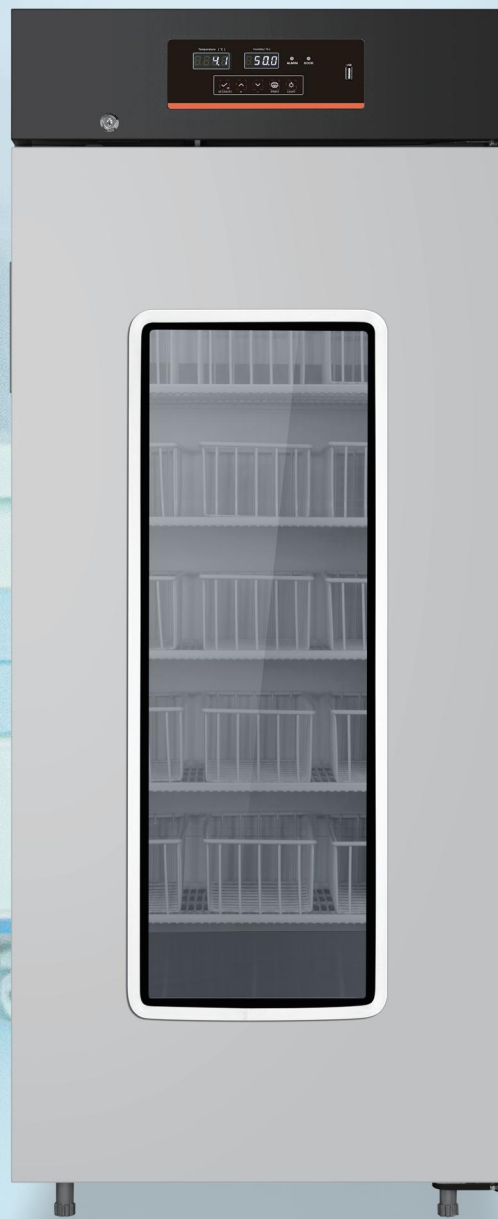


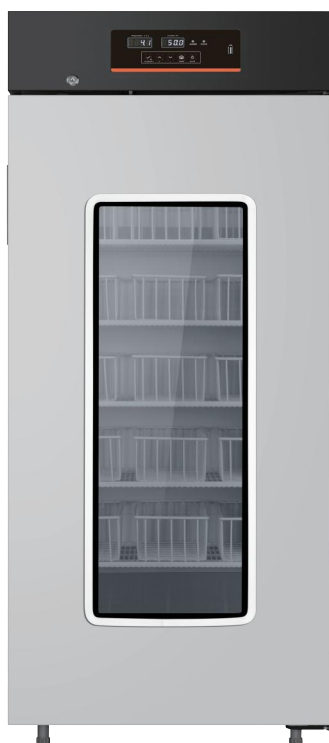
4°C Blood Bank Refrigerator



4°C Blood Bank Refrigerator

Scope of Application

The Midea Blood Bank Refrigerator provides safe and reliable storage for blood products. With precise temperature control and efficient cooling, it ensures optimal preservation. Equipped with advanced features, it provides a secure and user-friendly solution for medical facilities. The perfect choice for safe and efficient blood storage.



MXY-206



Precise Temperature Control for Safe and Reliable Blood Storage.



Easy-to-Extract Stainless Steel Sliding Drawers for Convenient Blood Storage and Retrieval.



Complete Sound and Light Alarm System for High/Low Temperatures, Power Outages, Door Opening, Sensor Failures, and Low Battery Power.



EasyGo Convenient Design with USB Data Recorder, Automatic Door Closing, and 90-Degree Hovering Function.



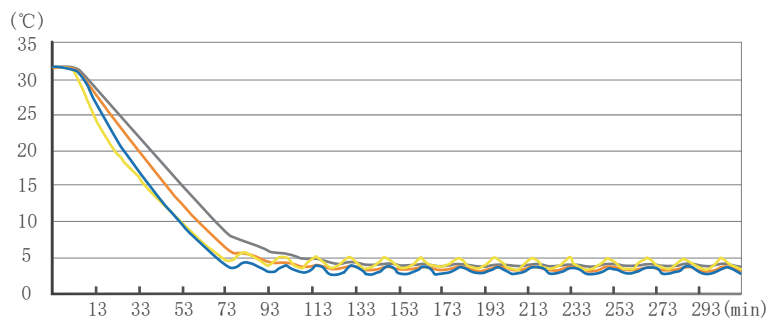
LBA Forming Technology for More Uniform Density, Better Insulation, and More Energy-Saving Foaming Layer Design.



Humanized Design with Safety Lock, Multi-Layers Gaskets for Better Temperature Insulation, Wide Voltage Range Design, Cable Port, and Anti-Condensation Door.

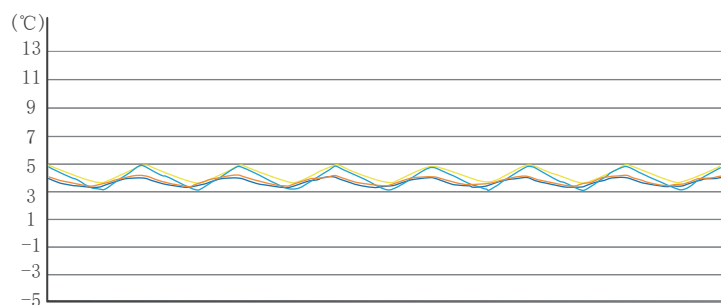
Temperature cool down curve

test 1 — test 2 — test 3 — test 4 —



Temperature uniformity

test 1 — test 2 — test 3 — test 4 —



MXY-206

4°C Blood Bank Refrigerator

LED Interior Lighting

The cabinet comes equipped with LED interior lighting and independent external light switches for easy access and visibility.

LED Display

Midea's unique dual display technology shows both temperature and humidity inside the unit.

USB Port

With a USB data recorder, you can easily record and analyze data.

Top Cooling

Top Cooling technology boosts temperature variation performance by 40% and increases cooling efficiency by 15%, ensuring reliable and energy-efficient operation.

Wire Shelves


High quality alloy construction delivers unmatched strength-to-weight ratio. Corrosion-resistant reinforced, 30% lighter than conventional stainless steel shelving.

90-degree hovering function

Blood Bank Refrigerator automatic door closing function ensures secure and efficient operation, while the 90-degree hovering function provides easy access to blood bag.



4°C Blood Bank Refrigerator

Item	Model	MXY-206
	Product Image	
Data	Cabinet	Upright
	Climate Class	N
	Cooling Type	Forced Air Cooling
	Defrost	Auto
	Refrigerant	R600a/45g
	Capacity(L/Cu.Ft)	206/7.27
	Blood Storage Capacity	150(400ml blood bags)
	External/Inner Material	PCM/304 Stainless Steel
	Sound Level (dB)	55
Control	Controller	Microprocessor
	Display	LED
	Temperature Accuracy(°C)	0.1
	Temperature Uniformity(°C)	±1
	Temperature Volatility(°C)	<2
	Temperature Range(°C)	4°C
Dimensions	Product Dimensions(mm)(w*d*h)	595*680*1620
	Inerior Dimensions(mm)(w*d*h)	515*455*1030
	Load Capacity(40HQ)	51
	Net/Gross Weight(kg)	81/86
Electrical Date	Power Supply	220-240-/50
	Rated Power(W)	220
	Rated Current(A)	2.2
Functions	Power Failure Alarm	Y
	Sensor Failure Alarm	Y
	High Ambient Temperature Alarm	Y
	Low Battery Alarm	Y
	Door ajar Alarm	Y
	High/Low Temperature Alarm	Y
	Remote Alarm	Y
Accessories	Shelves/Drawers Qty	6
	Door	Foamed Glass Door
	Self-Lock	Optional
	Cable Port	1
	Casters/Type	4/Omni-directional 2/Fixed wheels
	USB	Y
	RS-485 Port	Optional
	Printer	Optional
Backup Battery Endurance(h)	15	